

THE FOX & HOUNDS

LULSLEY

Keeping Everyone Safe

We have enacted a few changes at The Fox & Hounds...

Initial Service Hours

| DAY | OPEN | FOOD |
|-----------|-----------|-------------------|
| MONDAY | CLOSED | CLOSED |
| TUESDAY | CLOSED | CLOSED |
| WEDNESDAY | 4pm-11pm | 6-9pm |
| THURSDAY | 4pm-11pm | 6-9pm |
| FRIDAY | Noon-11pm | Noon-2pm 5-9pm |
| SATURDAY | Noon-11pm | Noon-9pm |
| SUNDAY | Noon-7pm | Noon-4pm |

These hours are subject to change

A full Risk Assessment has been completed

IF YOU ARE FEELING UNWELL, PLEASE SAVE YOUR VISIT
FOR ANOTHER DAY

ALLERGENS, DIETARY REQUIREMENTS ACCOMMODATED WHERE POSSIBLE
The Fox & Hounds, Lulsley, Worcestershire, WR6 5QT

THE FOX & HOUNDS

LULSLEY

HOW TO BOOK...

Customers can book for food via 01886 821 228

Due to our reduced capacity,
all Restaurant Reservations will have a default 2.5-hour time on each table
(with Sunday Lunch tables having a 2-hour limit)

If, during your visit, you wish to stay longer, we will do our utmost to accommodate you either at your table (if not booked out again) or in an alternate location in the Pub.

At the time of booking, we will need to collect a few details:

| |
|---|
| NAME |
| TIME & DATE OF BOOKING |
| TELEPHONE |
| NUMBER OF GUESTS |
| NUMBER OF HOUSEHOLDS |
| PREFERENCE OF INSIDE OR OUTSIDE (if booked outside, your table will be allocated a parasol. Due to our reduced capacity, and particularly on busier days, we cannot guarantee that we can re-accommodate your table inside in the event of inclement weather) |

You are welcome to request an email with our accompanying measures

Visiting the Pub for a drink cannot be booked and space will be allocated on a first-come-first-served basis.

ALLERGENS, DIETARY REQUIREMENTS ACCOMMODATED WHERE POSSIBLE
The Fox & Hounds, Lulsley, Worcestershire, WR6 5QT

THE FOX & HOUNDS

LULSLEY

ON ARRIVAL...

We will be asking all customers to park at the rear of the Pub and enter via the rear steps and through into the Conservatory.

(front parking spaces will be reserved for guests with mobility issues and for Takeaway Food customers).

From there, you will enter our new Welcome Area.

This is to ensure we can closely monitor the number of people entering and exiting the pub at any given time. Details of our new sanitising measures will be clearly visible. Guests will need to sign in.

Hand Sanitiser will be available on arrival.

You will be taken to your table - all tables inside and outside will be table service only. Please do not approach either bar.

Indoor gatherings need to be in groups of up to two households (including support bubbles). Outdoor gatherings of 6 people or less can be from any number of households. If your outdoor gathering is of 7 people or more, then all should be from no more than two households (or support bubbles). If your reservation does not fall within these categories, we will do our utmost to arrange socially distanced tables to accommodate where possible.

When at capacity, those without prior bookings will need to join a socially distanced queue.

ALLERGENS, DIETARY REQUIREMENTS ACCOMMODATED WHERE POSSIBLE
The Fox & Hounds, Lulsley, Worcestershire, WR6 5QT

THE FOX & HOUNDS

LULSLEY

TABLE SERVICE & NAVIGATING THE PUB...

Multiple hand sanitiser stations are positioned throughout the Pub.

Please follow the arrows to navigate and observe the strict social distancing measures we have in place.

We will be providing Table Service for all guests sat in the Top Beer Garden, Restaurant, Conservatory and Lounge.

The Bottom Garden and Children's Play area will remain closed.

We have reduced the number of tables in our restaurant and lounge to maximise space around diners. We want to reassure you that care and consideration has gone into spacing the distance between the tables and positioning of chairs.

All menus are single-use or laminated.

We will respect your distance when taking an order.

Please do not move the tables and chairs - including tables outside - without consulting staff.

Salt and peppers will be cleaned after every use.

THE FOX & HOUNDS

LULSLEY

CLEANING & HYGIENE...

All members of the Fox & Hounds Front of House Team have been thoroughly briefed on our rigorous sanitising measures. Their health concerns have been discussed and addressed. All staff temperatures will be taken and recorded at the start of each shift.

Team Members will be regularly sanitising their hands (and after each time they have come into contact with a contaminated item - used cutlery, tray of used glasses etc..)

Team members will be provided with face shields and/or masks. Staff have access to masks, gloves, hand washing facilities and sanitiser. Bar staff will be protected behind screens.

Touch points will be regularly sanitised.

After each guest has left, the space they occupied will be thoroughly sanitised.

Toilets will be regularly cleaned and numbers visiting them any one time will be restricted.

We ask that dogs remain on leads.

ALLERGENS, DIETARY REQUIREMENTS ACCOMMODATED WHERE POSSIBLE
The Fox & Hounds, Lulsley, Worcestershire, WR6 5QT

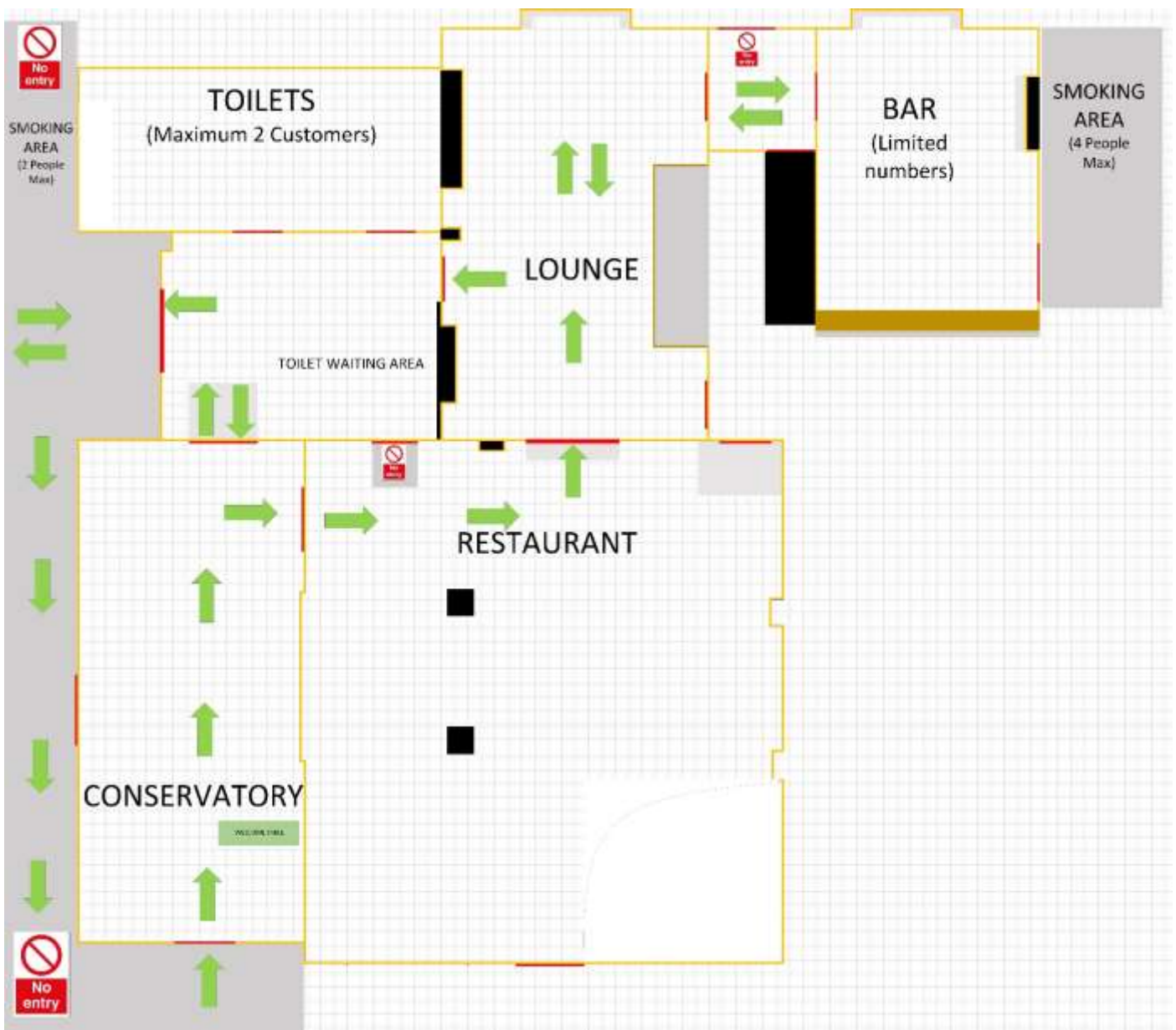
THE FOX & HOUNDS

LULSLEY

PAYMENT...

Contactless card payments are preferred. The card machine is sanitised after each chip and pin transaction.

INTERIOR NAVIGATION...



ALLERGENS, DIETARY REQUIREMENTS ACCOMMODATED WHERE POSSIBLE
The Fox & Hounds, Lulsley, Worcestershire, WR6 5QT